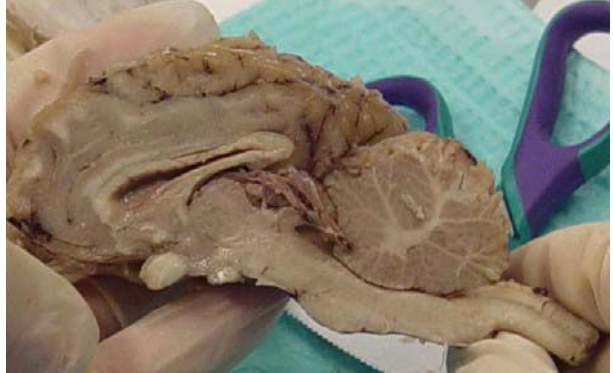


# Neuroscience for You and Your Classroom Understanding the Neurobiology of Learning (BrainU 2017)

**SAVE THE DATES: July 10 – July 20, 2017**

- Explore the mechanisms of how learning actually alters the brain.
- Understand the basic concepts of how the brain functions, from changes at synapses to motivation and decision-making.
- Tour active research laboratories and participate in discussions with the investigators.
- Apply the neuroscience research that impacts teaching and learning to your lessons.

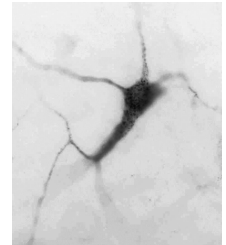


Sheep Brain Dissection

A major component of the workshop involves participants conducting hands-on, active-learning experiments and observations designed to probe different aspects of nervous system function that can be done in your classroom. Discuss and plan how to incorporate ideas from neuroscience into your practice. All content explored in the workshop maps to NGSS and MN Science Standards with an emphasis on inquiry.

This Professional Development Workshop is open to all K-12 teachers with or without subject matter specializations. Willingness to think deeply about how the brain changes with learning and to apply these ideas to your teaching are all that is required.

After BrainU training, teachers promote the implementation of student-centered pedagogies, provide a more authentic, deeper learning environment for students, increase student general support, social emotional support and classroom equity, and think critically about their pedagogy to implement change.



### **What BrainU teachers are saying:**

"This is bar none the best program I've been part of in a long time. With 25 years experiences and a masters plus 80 extra credits, that speaks volumes, I believe."

### **Time/Location:**

8AM – 4PM Monday-Friday

Location: University of Minnesota, Minneapolis Campus

### **Instructor:**

Dr. Janet Dubinsky, Professor, Department of Neuroscience, UMN Medical School



### **To Apply:**

Applications open Jan. 2, 2017.

For application details and tuition/fees information, please go to <http://Brainu.org/>

**Class limited to 30 students. Early application is recommended.**

**For more information, contact:** Janet Dubinsky, [dubin001@umn.edu](mailto:dubin001@umn.edu)

View our materials at [Brainu.org](http://Brainu.org) or visit us on [Facebook](#) for late breaking news and updates!