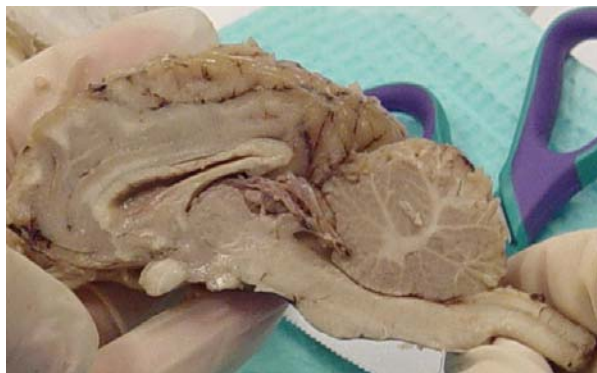


BrainU: Classroom Investigations of the Brain & How it changes with Learning and Drugs (grades 9-12)

4 weekends in 2009-2010

Explore the basis of learning, memory, and brain function. Demystify neuroscience, the science behind drug abuse and how addictive drugs alter learning and memory. From the changes at synapses to motivation and decision-making, understand the basic concepts of how the brain works.



As a participant of this workshop you will conduct hands-on, active-learning experiments and observations designed to probe different aspects of nervous system function. Dissect sheep brains. Design, execute, analyze and evaluate experiments that can be done in your classroom. All content maps to MN Science Standards.

During the 2009-2010 school year, materials, resources and classroom assistance will be provided to do investigations and experiments in participants' classrooms.

Location & Time:

Winona State University 8am-4pm Friday & Saturday
Oct 9-10; Nov 6-7; Dec 4-5, 2009; Jan 8-9, 2010; (Feb 5-6 alternate snow dates)
Funds up to \$150/day are available to pay substitutes for Fridays.

Instructors:

Dr. Janet Dubinsky (Professor, Department of Neuroscience, UMN Medical School)
Dr. Gillian Roehrig (Associate Professor, Department of Curriculum and Instruction, College of Education and Human Development)
Three University of Minnesota graduate credits will be offered for BrainU (Nsci 5916). Tuition, College of Continuing Education registration fee (\$75), lunches and parking will be covered by a Science Education Drug Abuse Partnership Award from the National Institutes of Drug Abuse, National Institutes of Health. Additional student fees may apply depending upon enrollment status.

To Apply:

Apply online.

<https://appl.cbs.umn.edu/bass-prod/bass/alder/cgi/hawk/FormEngine?formMode=request&formId=448>

Class limited to 24 students.

Applications received by Sept. 21, 2009 will be given priority.

For more information, contact:

Gillian Roehrig, roehr013@umn.edu
Janet Dubinsky, dubin001@umn.edu