

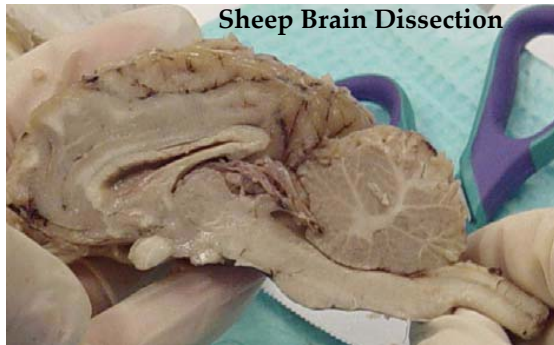
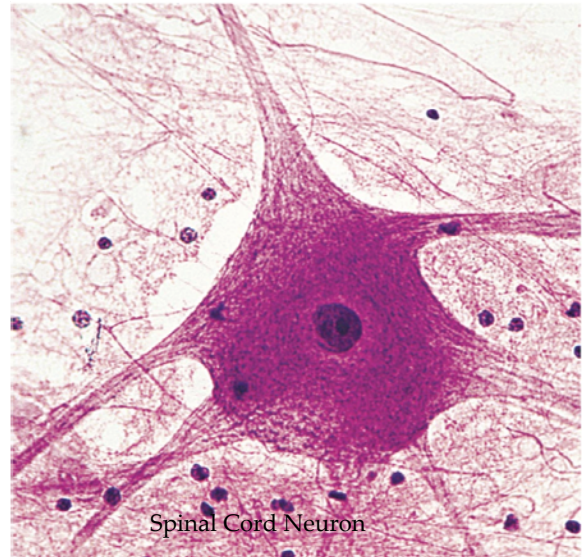
AH/SP BrainU 101: Classroom Investigations of the Brain and How the Brain Changes with Learning

Anoka-Hennepin & St. Paul Public Schools Biology Teachers Only

July 26 – August 6, 2010

Investigate the master control system of human homeostasis. Examine some of the latest laboratory findings of brain function with the actual researchers that are conducting the investigations. Explore the mechanisms whereby learning actually alters the brain. Understand the basic concepts of how the brain functions from changes at neuron synapses to motivation and decision-making.

As a participant of this workshop you will have an opportunity to tour active research laboratories, participate in discussions with the investigators, and explore how neuroscience research impacts teaching and learning.



A major component of the workshop involves participants conducting hands-on, active-learning experiments and observations designed to probe different aspects of nervous system function. Dissect sheep brains. Design, execute, analyze, and evaluate experiments that can be done in your classroom. All content explored in the workshop maps to MN Science Standards with an emphasis on inquiry.

During the 2010-2011 school year, materials, resources, and classroom assistance will be provided to do investigations and experiments in participants' classrooms.

Participating teachers will be compensated at the negotiated daily rate (\$194.00/day). Graduate credits available. Class limited to 15 teachers/District.

Applications received by **April 15** will be given priority.

Time/Location

8AM – 4PM Monday-Friday Biological Science Bldg. Room 64, St. Paul campus

Instructors

Dr. Janet Dubinsky (Professor, Department of Neuroscience, UMN Medical School)

Dr. Gillian Roehrig (Associate Professor, College of Education and Human Development)

Apply online at www.cbs.umn.edu/hawk/form515

For more information, contact:

Ken Jeddelloh, jedde001@umn.edu

Gillian Roehrig, roehr013@umn.edu

Janet Dubinsky, dubin001@umn.edu

or visit <http://brainu.org/>