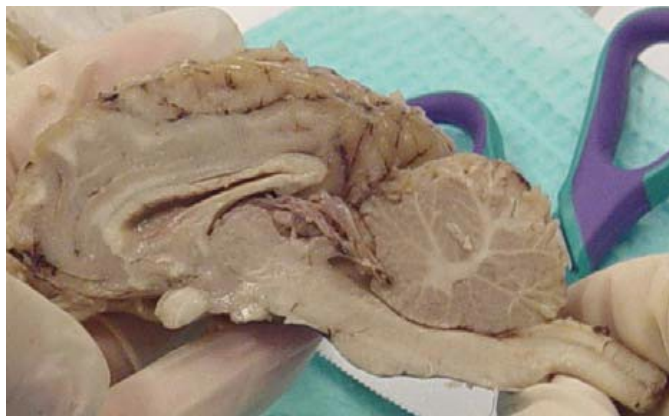


BrainU: Classroom Investigations of the Brain & How it changes with Learning and Drugs (Biology Teachers Grades 9 -12)

June 21 – July 2, 2010

Investigate the master control system of human homeostasis. Examine some of the latest laboratory findings of brain function with the researchers that are conducting the investigations. Explore the mechanisms whereby learning actually alters the brain.

Demystify the science behind drug abuse and how addictive drugs alter learning and memory. Understand the basic concepts of how the brain functions from changes at synapses to motivation and decision-making.



Sheep Brain Dissection

As a participant of this workshop, you will have an opportunity to tour active research laboratories, participate in discussions with the investigators, and explore how neuroscience research impacts teaching and learning.

A major component of the workshop involves participants conducting hands-on, active-learning experiments and observations designed to probe different aspects of nervous system function. Dissect sheep brains. Design, execute, analyze, and evaluate experiments that can be done in your classroom. All content explored in the workshop maps to Minnesota Science Standards with an emphasis on inquiry.

During the 2010-2011 school year, materials, resources, and classroom assistance will be provided to do investigations and experiments in participants' classrooms.

Time/Location:

8AM – 4PM Monday-Friday 6135 Jackson Hall, Minneapolis campus

Instructors:

Dr. Janet Dubinsky (Professor, Department of Neuroscience, UMN Medical School)

Dr. Gillian Roehrig (Associate Professor, Department of Curriculum and Instruction, College of Education and Human Development)

Three University of Minnesota graduate credits will be offered for BrainU (Nsci 5913). Tuition, College of Continuing Education registration fee, lunches, and parking will be covered by a Science Education Drug Abuse Partnership Award from the National Institutes of Drug Abuse, National Institutes of Health. Additional student fees may apply depending upon enrollment status.

Apply online at www.cbs.umn.edu/hawk/form510

Class is limited to 25 students.

Applications received by April 15 will be given priority.

For more information, contact:

Gillian Roehrig, roehr013@umn.edu

Janet Dubinsky, dubin001@umn.edu